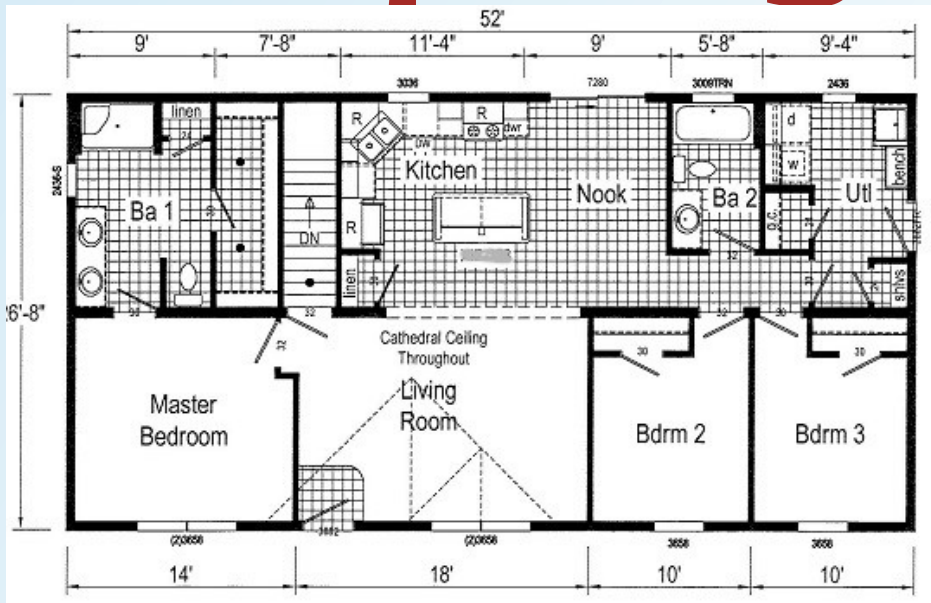


Price as Shown \$ _____
 Includes delivery and crane set on
 your basement
 Prices Subject to Change



The Springfield



26' x 52'
1387 Sq. Ft.

OPTIONS IN OUR MODEL

- Closed Basement Stairwell
- Furnace Boots and Registers
- Cold Air Returns
- Extra Exterior Water Faucet
- Fiberglass Fire Rated Door
- Clay Storm Door
- Vinyl Sliding Glass Door-Nook
- R-21 Wall Insulation
- Lineals on all Windows
- 5/12 Roof Pitch with Cathedral Ceilings
- 40# Roof Load
- 16" Eaves and Gable Ends
- 18'8" Twin Peak Dormer
- Clay Package
- Drop Electrical Panel Box to Basement
- White Deluxe Ceiling Fan-LR
- Computer Jack/Recept Combo-LR
- Programmable Thermostat
- Barnwood Wrapped Molding Package
- Gooseneck Pull Down Kitchen Faucet
- 3 6" Flush Mount LED Lights in Kitchen
- Black 24 cu SxS Refrigerator
- Black Dishwasher
- Contemporary Cabinet Pulls
- Kitchen Island XIB 336
- Full Wall Ceramic Backsplash
- Full Wall Backsplash at Range
- 30" Cabinet and Wire Shelf over Laundry Area
- Utility Sink with Cabinet
- 30" Boot Bench-Utility Room
- 2 Panel White Interior Door-Utility Room
- 2 Panel White Interior Door-Utility Room Linen Closet
- 24" X 36" Utility Room Window
- 36" x 48" Fiberglass Shower-Master Bathroom
- Double Lavs - Master Bathroom
- Brushed Nickel Structured Flow Bath Faucets
- 24" X 36" Master Bathroom Window-End Wall
- 30" X 9" Transom Window-Guest Bath