

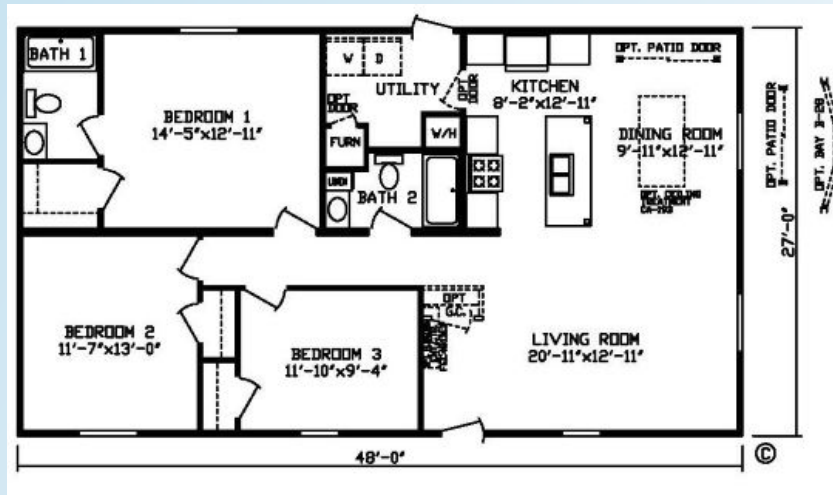
Price as Shown \$ _____
Includes delivery and anchored
On your slab
Prices Subject to Change



110 Brooke Ct., Bonduel, WI 54107
(715)758-7500 www.northcountryhomes.com

The Quincy

27' x 48'
1296 Sq. Ft.



OPTIONS IN OUR MODEL

- 30# Roof Load
- Perimeter Heat
- Roof Jack Extension
- Ceiling Fan W/Light Kit Centered Livingroom
- 2 Recessed LED Can Lights over Island
- 2 Recessed LED Can Lights in Dining Room
- 2nd Conduit from Electrical Panel
- 200 AMP
- Exterior Receptacles; Front Door, Rear Door and Patio Door
- Frost Free Exterior Faucet
- S/L Kitchen Faucet W/Sprayer
- Water Shut Off Valve-Washer/Dryer Area
- Water Shut Offs Throughout
- 40 Gallon Electric Water Heater
- Towel and Tissue Holders Both Baths
- R33 Ceiling Insulation
- 2X6 Sidewalls W/R-19 Insulation
- Shaker Hardwood Doors & Face Frames
- 2-15" Cabinets Over Washer/Dryer Area W/Rod
- Panel Box Cover
- 2 1/2" Ceiling Crown Throughout
- 2 1/4" Door and Window Casing
- 30 Year Architectural Shingles
- Shutters on All Windows
- 34"x82" 9 Lite Deco Rear Door w/Storm
- 72"x80" Vinyl Patio Door W/O Grids on Dining Room Wall
- Metal Water Heater Door
- Metal Furnace Door
- Extra 30X60 Vinyl Window Livingroom Sidewall