

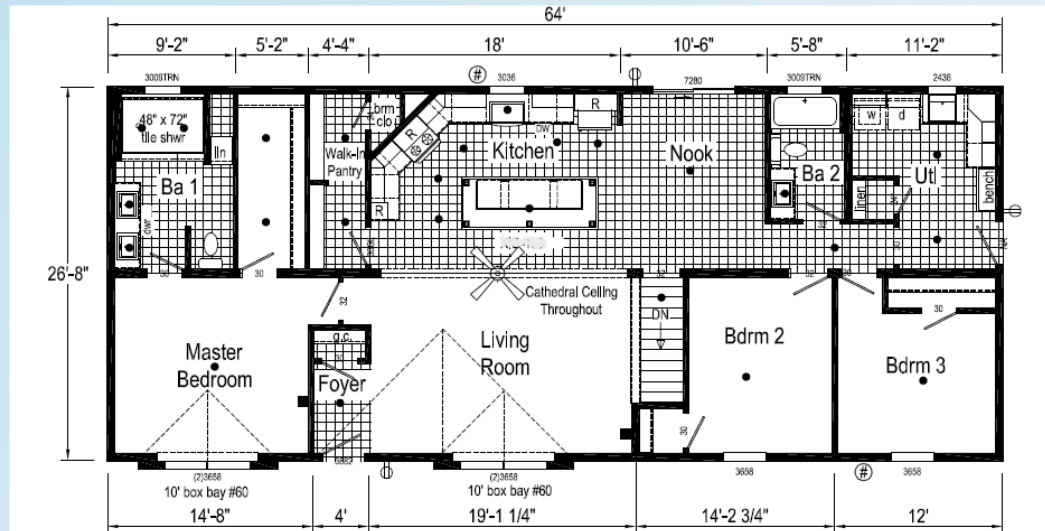
Price as Shown \$ _____
 Includes delivery and crane set
 On your basement
 Prices Subject to Change



110 Brooke Ct., Bonduel, WI 54107
 (715)758-7500 www.northcountryhomes.com

The Lincoln

26'X64'
1707 Sq. Ft.



OPTIONS IN OUR MODEL

- Open Stairwell with Half Wall
- Boots and Registers Installed
- Cold Air Returns-Low on Wall
- 2 Exterior Water Faucets
- Brushed Nickel Pull Down Gooseneck Kitchen Faucet
- Brushed Nickel Utility Room Faucet
- Stainless Steel Galley Kitchen Sink
- Monterey Half Lite Front Door W/Storm Door
- Fire Rated Door
- 6' Sliding Glass Door - Nook
- 24X36 Vinyl Window Utility Room
- 30X9 Transom Window in Both Bathrooms
- Bay Windows Bedroom 1 and Living Room
- R-21 Wall Insulation
- Marriage Wall Underlayment
- Window Lineals all around Home
- 40# Roof Load with 5/12 Cathedral Ceilings
- 16" Eaves and Gable Ends
- 10' Flush Dormer
- 18'8" Twin Peak Dormer Living Room
- Shake on Both Dormers
- Shake Accent Both Box Bays
- Upgraded Siding
- Ceiling Fan – Living Room Center Beam
- 2 TV Jack W/Conduit
- 2 Black Pendant Lights over Island
- 7 Total LED Can Lights
- Carbon Monoxide Detector
- 2 Lights at Front Door, 1 each side of Door
- Drop Electrical Panel Box to Basement
- SS Space saver Microwave
- SS 20 CF Refrigerator
- SS Gas Stove
- SS Dishwasher
- Hardwood Molding under Kitchen Cabinet
- Cabinet Drawer over Door
- 8 Pull Out Shelves
- Brush Nickel Cabinet Pulls
- Kitchen Island XIB-256
- Full Wall Kitchen Backsplash
- 30" Cabinet and Wire Shelf over Laundry
- Utility Sink with Cabinet
- 36" Boot Bench
- 4'X6' Walk in Ceramic Shower in Master Bathroom
- Double Sinks Master Bathroom
- Drawer Bank Between Sinks Master Bathroom
- Linen Cabinet Toilet Topper Bath 2
- Pantry Door W/Glass Insert
- Wisconsin State Package
- Structured Flow Bath Faucets