

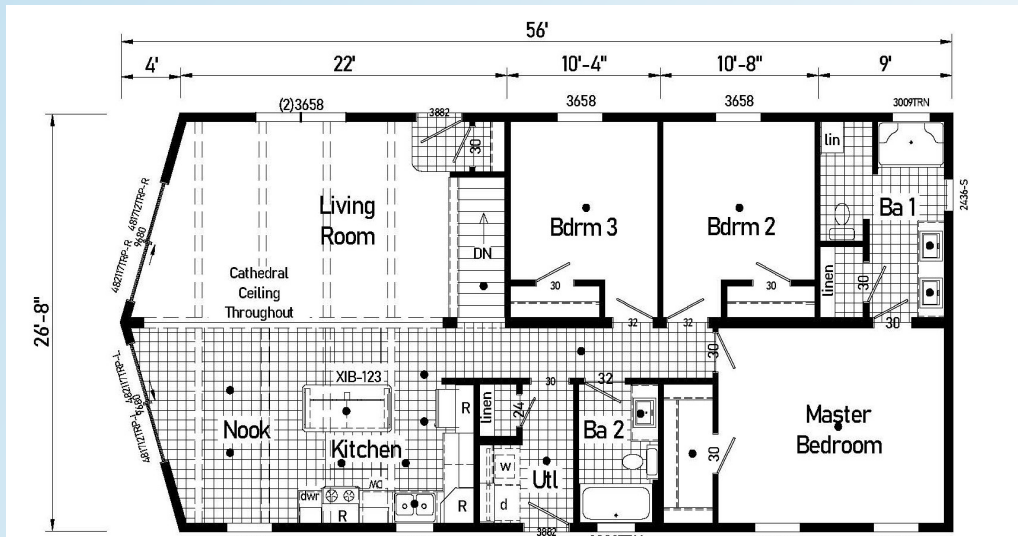
Price as Shown \$ \_\_\_\_\_  
 Includes delivery and Crane Set  
 On your basement  
 \*\*Prices Subject to Change\*\*



110 Brooke Ct., Bonduel, WI 54107  
 (715)758-7500 www.northcountryhomes.com

# The Helena

26' x 56'  
 1436 Sq. Ft.



## OPTIONS IN OUR MODEL

- Linoleum Floor - Hall
- Open Stairwell W/Half Wall
- Boots and Registers Installed
- Cold Air Returns-Low on Wall
- Black Pull Down Gooseneck Kitchen Faucet
- Black Bathroom Faucets
- Half Lite Half Glass Fiberglass Front and Rear Doors
- Storm Doors Both Front and Rear Doors
- 8' Patio Doors – Nook and Livingroom End walls
- 24X36 Vinyl Window in Bathroom 1
- 30X9 Window Transom Both Bathrooms
- 8' Window Trapezoid above Patio Doors
- R-21 Wall Insulation
- Marriage Wall Underlayment
- Metal Roof
- 16" Eaves and Gable Ends
- Smart Lap Siding
- Clay Exterior Package
- Prow End W/Cathedral Ceiling
- Deluxe White Ceiling Fan-Livingroom Marriage Wall Centered
- TV Jack W/Conduit-Livingroom and Master Bedroom
- 2 Black Pendant Lights over Island
- 8 Total 6" Flush LED Kitchen and Nook
- Floor Receptacle in Living Room
- Carbon Monoxide Detector
- Drop Electrical Panel Box to Basement
- Opal Appliance Package
  - 20 CF SS Top Freezer Refrigerator
  - Gas Stove
  - Dishwasher
- Space saver Range Hood Microwave
- Flat Panel Hickory Cabinets
- Black Cabinet Pulls
- Optional Kitchen Island (XIB336)
- Full Ceramic Kitchen Backsplash
- 30" Cabinet and Wire Shelf over Laundry
- 36" x 48" Fiberglass Shower W/Shower Doors-Bath 1
- Double Lav in Bath 1
- Toilet Topper Linen Cabinet – Bath 2
- Hickory Ceiling Beams-Livingroom and Kitchen/Nook Area
- Structured Flow Bath Faucets