

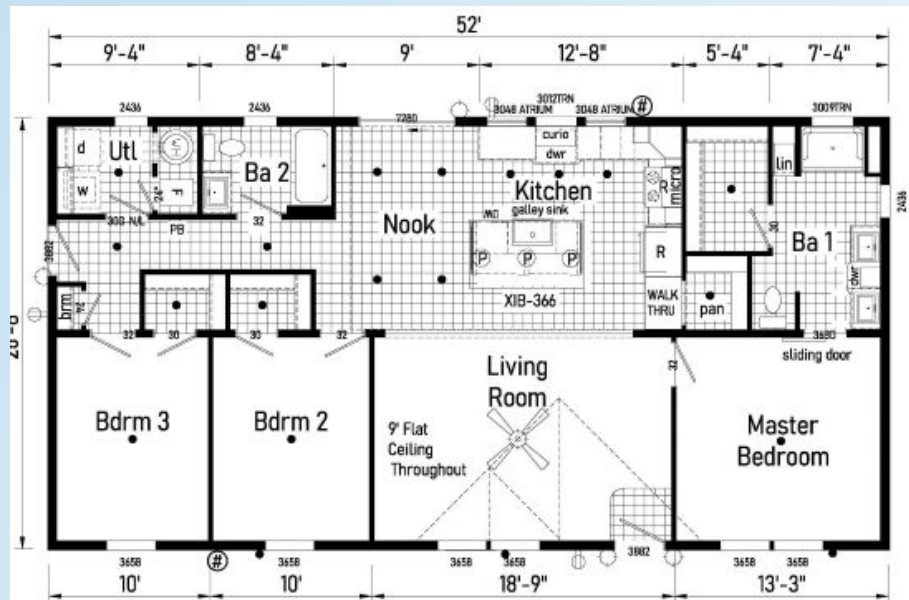
Price as Shown \$ _____
 Includes delivery and Anchored to
 your Slab
 Prices Subject to Change



110 Brooke Ct., Bonduel, WI 54107
 (715)758-7500 www.northcountryhomes.com

The Jefferson

26'x52'
 1387 Sq. Ft.



OPTIONS IN OUR MODEL

- Perimeter Heat Registers
- 50 Gallon Electric Water Heater
- 2 Exterior Water Faucets
- Structured Flow Bathroom Faucets Throughout
- Monterey Half Lite Front Door
- Half Lite Half Glass Fiberglass Rear Door
- Storm Doors Both Front and Rear Doors
- 6' Patio Doors – Nook
- 24X36 Vinyl Window in Bathroom 1, Bathroom 2 and Utility Room
- 30X9 Window Transom in Bathroom 1
- R-38 Ceiling Insulation
- R-22 Floor Insulation
- 9' Flat Ceiling
- Marriage Wall Underlayment
- Window Lineals – All Around Home
- 16" Eaves and Gable Ends
- 18'8" Twin Peak Dormer
- Upgraded Siding
- Wind Wrap
- 200 AMP Service
- 2nd Conduit from Panel Box
- Carbon Monoxide Detector
- Programmable Thermostat
- Exterior Lights each side of Front Door
- Two LED Soffit Lights
- Painted Maple Cabinets Throughout
- Kitchen Pull out Trash Bin – Left of Sink
- Lazy Susan ½ Round – Kitchen Corner
- Brushed Gold Cabinet Hardware
- 30" Cabinet and Wire Shelf over Laundry
- 48"X36" Tub/Shower – Bathroom 1
- Decorative Black Framed Mirrors Both Bathrooms
- White Cabinet Door over Panel Box