

North Country Homes, Inc.

110 Brooke Ct.

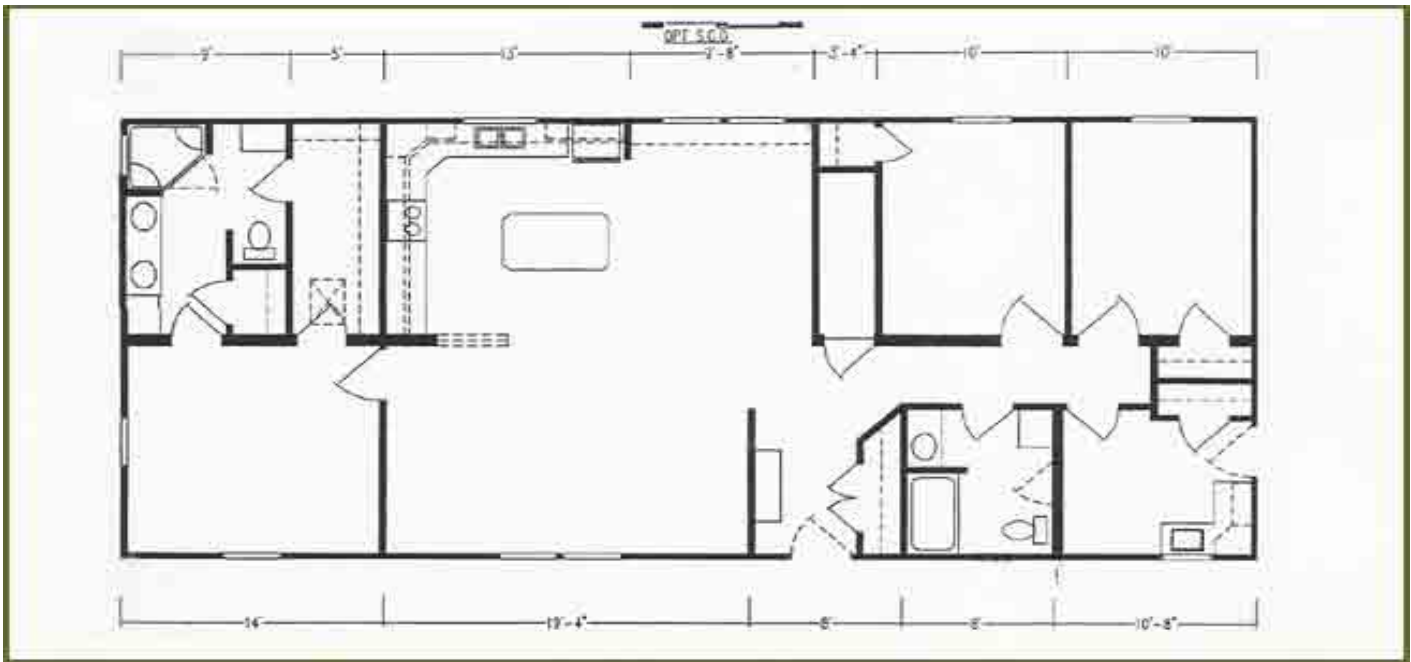
Bonduel, WI 54107

(715)758-7500

(715)758-7501 Fax

www.northcountryhomes.com

The Wilkshire



28' X 60'

1660 Sq. Ft.

OPTIONS IN OUR MODEL

- 5/12 Roof Pitch with 8' Cathedral Ceilings
- Architectural Shingles
- Open Stairwell
- 42" Overhead Kitchen Cabinets
- Angled Foyer Wall w/Light & Oak Ledge
- Clay Windows & Front Door
- Skyview Radius Dormer
- Shutters on All Windows
- Carpet
- Ceiling Fan with Light in Living Room
- Dual Switches for Vent/Light in Both Baths
- Recessed Can Light in Kitchen
- Pot & Pan Rack over Kitchen Island
- Wired for Electric Range
- Ceramic Counter Edge in Kitchen
- Full Wall Ceramic Tile with Bronze Accents in Kitchen
- Plumbed for Icemaker
- Wired for Spacemaker Microwave above Range
- Plumbed & Wired for Dishwasher
- Ceramic Counter Edge in Both Baths
- Double Sinks in Master Bath
- Fire Rated 38x82 Rear Door (Primed)
- 6-Panel Steel Front door with Sunburst
- Vinyl Patio Door in Dining Room
- 2" White Blinds Throughout
- Drapery Package
- Oak Window Sill in Kitchen
- Hardwood Trim Package
- Hardwood Base Trim on Kitchen Cabinets
- Cabinet Pulls Throughout
- 30x36 Window in Guest Bath
- Double Mulled Window in Master Bedroom
- Wood Valance over Patio Door
- Vertical Blinds on Patio Door