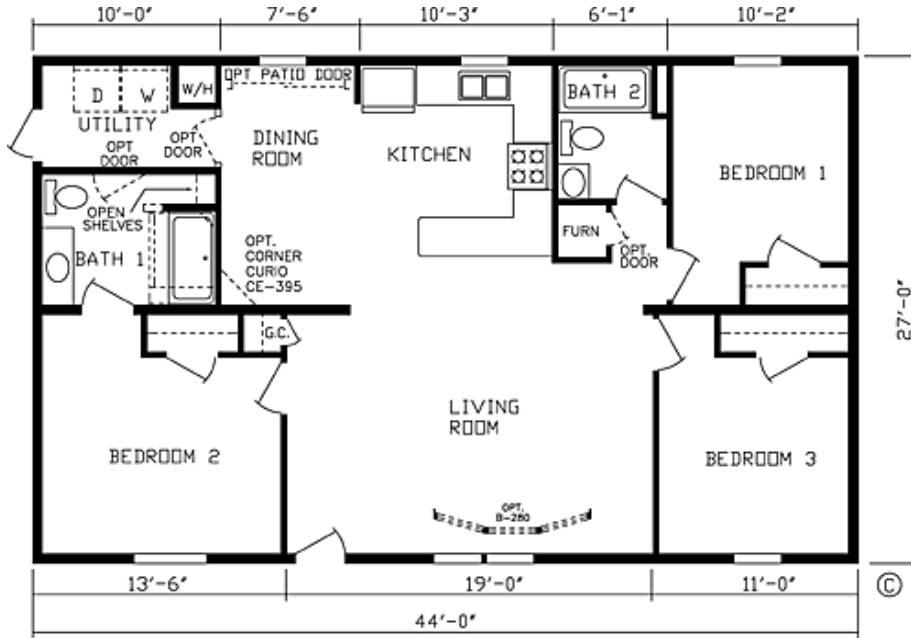


North Country Homes, Inc.

110 Brooke Ct.
Bonduel, WI 54107
(715)758-7500
(715)758-7501 Fax

www.northcountryhomes.com

The Somerset



27' X 44'

OPTIONS IN OUR MODEL

1188 Sq. Ft.

- Perimeter Heat with Insulated Ducts T/O
- Foyer at Front Door
- 40 Gallon Electric Water Heater
- Water Shut off at all Sinks and Stools
- Frost Free Exterior Faucet
- 1-Pc Fiberglass Tub in Both Baths
- Backsplash in Kitchen
- Backsplash in Both Baths
- M&T Flat Panel Cabinet Doors T/O
- Cabinet over Refrigerator
- Breaker Box Cover
- Metal Furnace Door
- Limited Plus Drapery Package
- Cap Molding on Kitchen Cabinets
- Dormer over Front Door
- Decorative Front Door with Storm
- 9-Light Rear Door with Storm
- Vinyl Low-E Windows w/Grids
- 17 CF Refrigerator
- 3 Arm Chandelier
- Hardwood Oak Cabinet Stiles & Hidden Hinges
- Finished Drywall Throughout except Wet Areas
- Fabric Shower Curtain in Both Baths
- Wood Medicine Cabinets with Lights in Both Baths
- Shutters on All Windows
- OSB Sheathing
- Vinyl Patio Door in Dining Room
- Skylight in Both Baths
- Rust Patina Coach Lights at all Doors
- Ceiling Fan with Light in Living Room
- 200 AMP Service
- Single Lever Faucet with Sprayer in Kitchen
- Porcelain Bath Sinks
- R-30 Roof Insulation
- Wainscot in Living & Dining Rooms
- Passage Door from Utility to Kitchen
- Lined Kitchen Cabinets with Center Shelves
- Cabinet Pulls
- 90" Sidewalls with Cathedral Ceilings
- Roof Jack Extension
- Optional Snack Bar in Kitchen