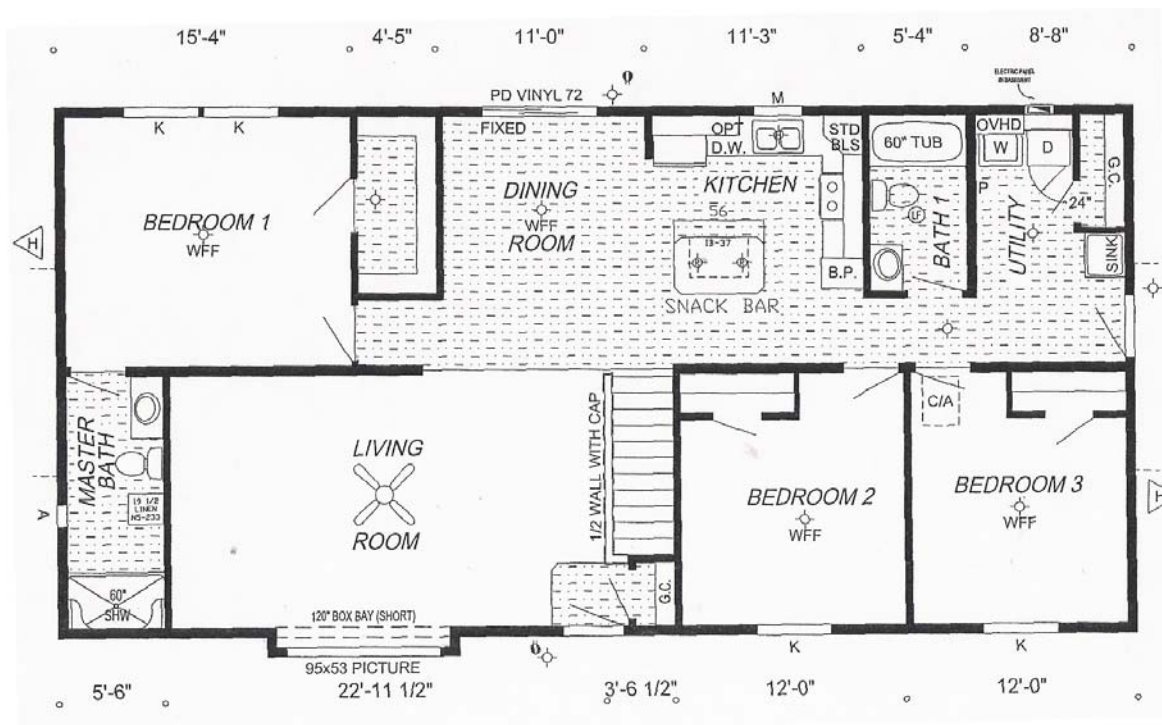



North Country Homes, Inc.
 110 Brooke Ct.
 Bonduel, WI 54107
 (715)758-7500
 (715)758-7501 Fax
www.northcountryhomes.com

The Heartland



28' X 56'

OPTIONS IN OUR MODEL

1531 sq. ft.

- | | |
|---|---|
| <ul style="list-style-type: none"> • Ceiling Fan with Light in Living Room • 3 Arm Brushed Nickel Chandelier in Dining Room • Laundry Cabinet with Deep Sink and Shut Off • Overhead Cabinet with Shirt Rod in Washer/Dryer Area • Beveled Backsplash on Kitchen Counters • Beveled Hardwood Edge on Kitchen Counters • Single Door Butler Pantry in Kitchen • Satin Nickel Cabinet Hardware T/O • Delta Single Lever Kitchen Faucet with Sprayer • 37" Snack Bar Island in Kitchen • Can Lights (2) over Island • Plumbed and Wired for Dishwasher • Linen Cabinet over Stool in Guest Bath | <ul style="list-style-type: none"> • Medicine Cabinet with Lights in Both Baths • Linen Cabinet in Master Bath • 60" Fiberglass Shower with Doors in Master Bath • Carbon Monoxide Detector • Hardwood Close-up Package • Vaulted Ceiling in Living Room & Foyer • Box Bay Window in Living Room • Shutters on All Windows • Sand Fascia & Soffit • 38"x82" Sand Steel Front Door • 6' Sand Patio Door in Dining Room • Sand Windows • 95"x53" sand Picture Window in Living Room • Drapery Package • Guest Closet in Utility Room |
|---|---|